

# POSH TERASEA OFFSHORE PTE LTD

No. 1 Kim Seng Promenade #06-01  
Great World City, Singapore 237994  
Tel +65 6839 6500 / Fax +65 6839 7840  
marketing@poshtersea.com.sg  
[www.poshtersea.com.sg](http://www.poshtersea.com.sg)



## SALVERITAS



**12,000 BHP/ 150 TBP AHT/ Ocean Towing/ Salvage Tug**      **Call Sign: S6HA5**

### Principal Particulars

Flag	: Singapore
Year Built	: 2007
Place Built	: Japan
Length Overall	: 68 m
Length B.P.	: 60 m
Breadth Moulded	: 16.4 m
Depth Moulded	: 7.2 m
Design Draft	: 5.2 m
IMO No.	: 9351828
Official No.	: 392059

### Classification

ABS + A1 (E) + AMS, "TOWING VESSEL"

### Capacities

Gross Tonnage	: 2658 tons
Nett Tonnage	: 797 tons
Deadweight at 6.00 m	: 2804 tons
Heavy Fuel	: 2050 cbm
Diesel Oil	: 200 cbm
Water ballast Tank	: 1000 cbm
Fresh Water	: 185 cbm
Foam	: 13 cbm
Oil Dispersant	: 13 cbm
Free Deck Space	: 350 sqm
Speed at design draft	: 15 knots
Bollard Pull	: 150 tons

### Accommodation

One Man Cabin	: 6
Two Men Cabin	: 5
Four Men Cabin	: 5
Total Complement	: 36 persons

### Machinery & Deck Equipment

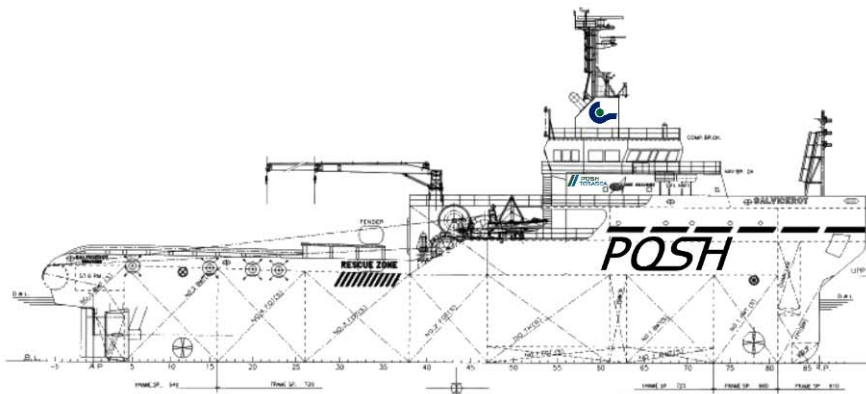
Main Engines	: Wartsila 9L32, 2x4,500 kW @ 750 Rpm
Propellers	: CPP in Nozzles (Lips)
Generators	: 2 x Diesel Main Generator 330 kw each 415v 3 Ph 50 hz 2 x Shaft Generator 1200 kw each 415v 3 Ph 50 hz 1 x Emergency Generator 60 kw 415v 3 Ph 50 hz
Bow Thruster	: 800 kW @ 12 tons thrust
Stern Thruster	: 588 kW @ 9.2 tons thrust
Deck Crane	: 1x hydraulic telescopic crane, 2tons x 14m

### Towing/Anchor Handling

Towing Winch	: Hydraulic Waterfall Double Drum Type Brake Holding Capacity @ 400 tons
Towing Wires	: 2x 1500 m x 76 mm Dia towing wires
Recovery Winch/tugger	: 2 x 20 ton electro-hydraulic winches with drum of 400m x 38mm dia
Storage reel	: 1 off 1500 m x 76 mm dia
Shark Jaw	: SWL 350 tons, hydraulic retractable type
Towing pin	: SWL 200 tons, hydraulic retractable type
Capstan	: 2 x 10 tons electro-hydraulic type
Sternroller	: SWL 350 tons 2.5 m x 2000 mm dia

### FiFi ½ System

External Fire-fighting	: FiFi ½, 2 x dual foam/water monitor @600cum/hr each.
------------------------	---



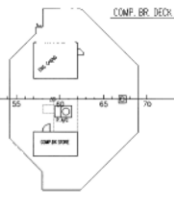
**PRINCIPAL PARTICULARS**

LENGTH(O.A)	APPROX. 68.0m
LENGTH(B.P)	60.00m
BREADTH(M.L.D)	15.40m
DEPTH(M.L.D)	7.20m
DRAFT (DESIGN) (M.L.D)	5.20m
DRAH I (SCAF) (M.L.D)	6.00m
CLASS	ABS TOWING VESSEL

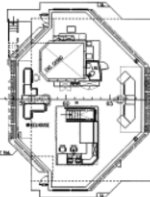
FIR. MONITOR STAGE



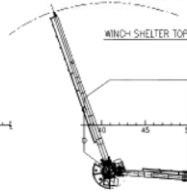
COMP. BR. DECK



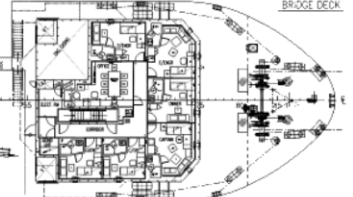
NAV. BR. DECK



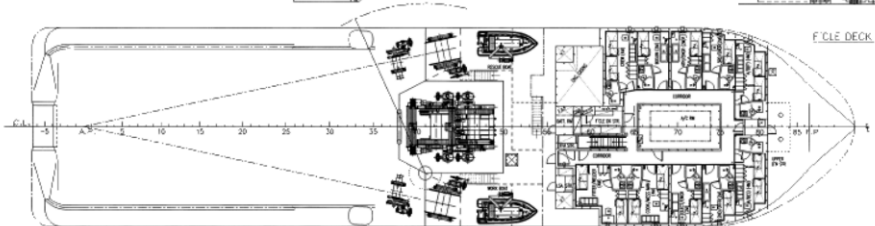
WIND-SHELTER TOP



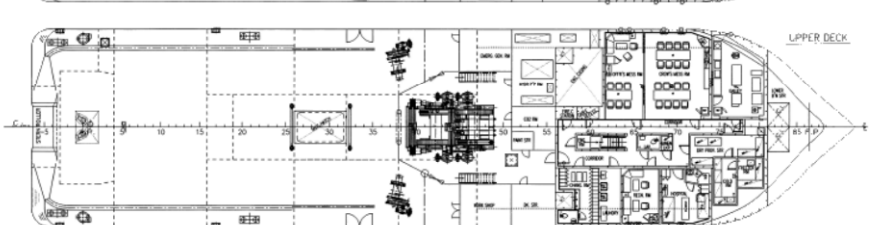
BRIDGE DECK



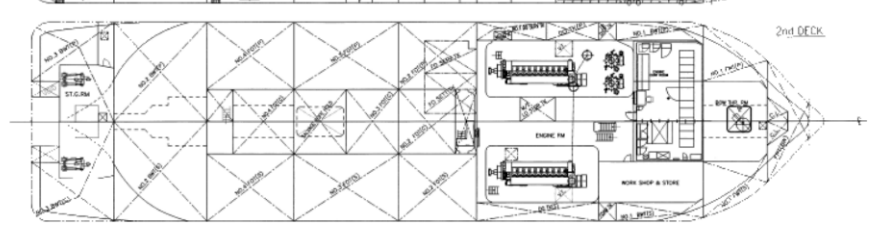
F. CLE. DECK



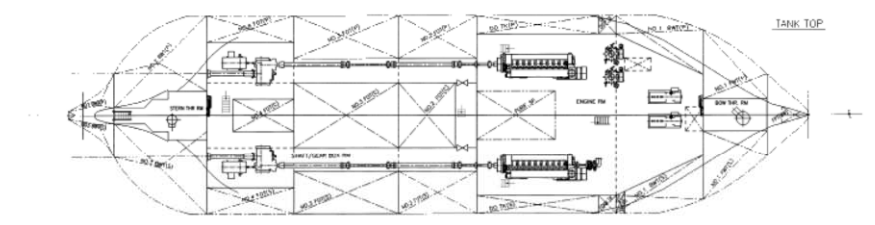
UPPER DECK



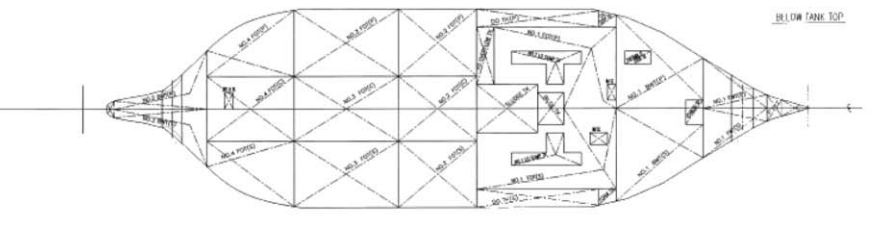
2nd DECK



TANK TOP



BELOW TANK TOP



THIS DOCUMENT AND ITS CONTENTS SHALL NOT BE MADE AVAILABLE TO ANY AND PART WITHOUT WRITTEN PERMISSION FROM POSH TERASEA Pte Ltd.

<p>POSH TERASEA Pte Ltd          110, Selegie Road, Singapore 117070          Tel: 65 6342 8877 (Ext 400)          Fax: 65 6342 8878</p>		<p>SCALE: 1:100</p> <p>DATE: 15/01/2013</p> <p>PROJECT NO: 10114</p>	
TITLE:	GENERAL ARRANGEMENT	DESIGNED BY:	TERASEA
NO:	01	CHECKED BY:	TERASEA
DATE:	15/01/2013	APPROVED BY:	TERASEA